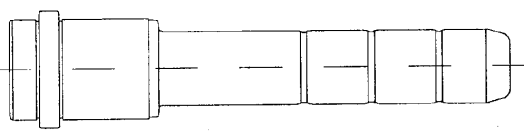
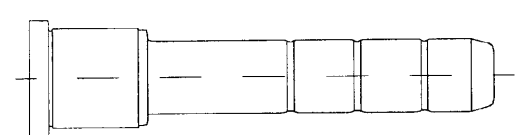
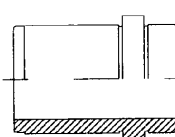
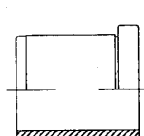

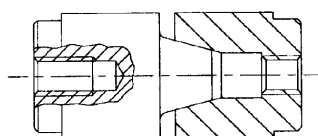


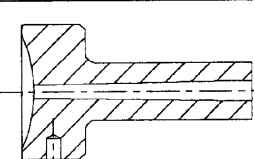



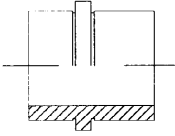
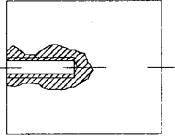
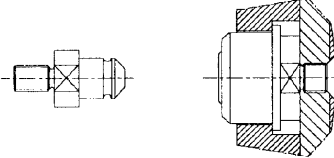
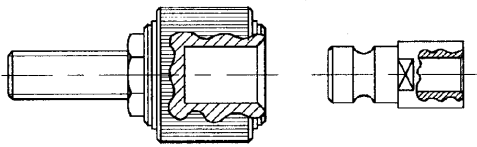
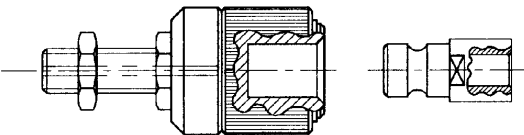
MDL

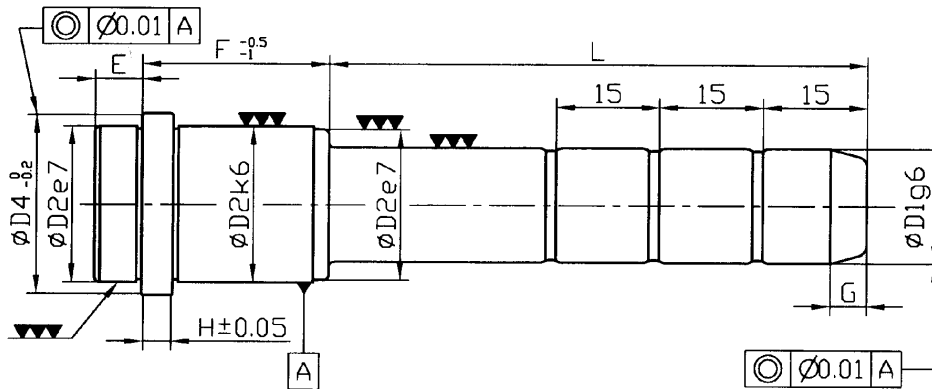


	Jxx.xxx.xxx	Colonne de guidage avec centrage	3.03 3.04
	Kxx.xxx.xxx	Colonne de guidage	3.05 3.06
	B70.xxx.xxx	Bague avec centrage	3.07
	B80.xxx.xxx	Bague	3.07
	B90.xxx.xxx	Douille de centrage	3.08
	W60.xxx.xxx	Centreur	3.09
	A60.xxx.xxx	Rondelle de centrage	3.10
	A61.xxx.xxx	Anneau de centrage	3.10
	W20.xxx.xxx	Buse d'injection	3.11 3.12
	P50.xxx.xxx	Colonne lisse	3.13



ELEMENTS STANDARDS POUR CARCASSES DE MOULES

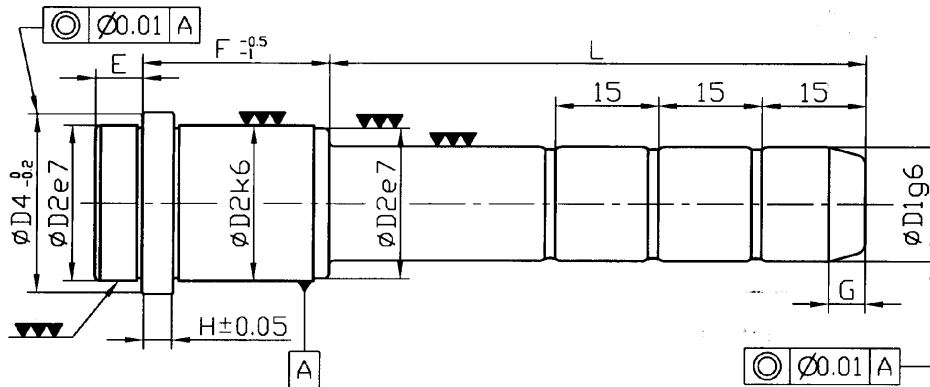
	B55 .xxx.xxx	Bague bronze	3.14
	A64 .xxx.xxx	Pilier taraudé	3.14
	W50 .xxx.xxx	Attelage d'éjection	3.15
	W51 .xxx.xxx	Attelage déjection	3.16
	W52 .xxx.xxxx	Attelage d'éjection	3.16



Dureté: 60-62 HRc

D2	D4	E	H	G	F	L	D1	Nr Ø	D1	Nr Ø
20	25	9	6	7	22	30	14	J14.022.030	15	J15.022.030
						50	14	J14.022.050	15	J15.022.050
						70	14	J14.022.070	15	J15.022.070
					27	30	14	J14.027.030	15	J15.027.030
						55	14	J14.027.055	15	J15.027.055
						85	14	J14.027.085	15	J15.027.085
						105	14	J14.027.105	15	J15.027.105
					36	145	14	J14.027.145	15	J15.027.145
						35	14	J14.036.035	15	J15.036.035
						55	14	J14.036.055	15	J15.036.055
						75	14	J14.036.075	15	J15.036.075
					46	95	14	J14.036.095	15	J15.036.095
						125	14	J14.036.125	15	J15.036.125
						35	14	J14.046.035	15	J15.046.035
						45	14	J14.046.045	15	J15.046.045
					56	65	14	J14.046.065	15	J15.046.065
						105	14	J14.046.105	15	J15.046.105
						125	14	J14.046.125	15	J15.046.125
						55	14	J14.056.055	15	J15.056.055
					66	75	14	J14.056.075	15	J15.056.075
						95	14	J14.056.095	15	J15.056.095
						135	14	J14.056.135	15	J15.056.135
						55	14	J14.066.055	15	J15.066.055
					76	65	14	J14.066.065	15	J15.066.065
95	14	J14.066.095	15	J15.066.095						
125	14	J14.066.125	15	J15.066.125						
55	14	J14.076.055	15	J15.076.055						
	95	14	J14.076.095	15	J15.076.095					
	105	14	J14.076.105	15	J15.076.105					
	135	14	J14.076.135	15	J15.076.135					

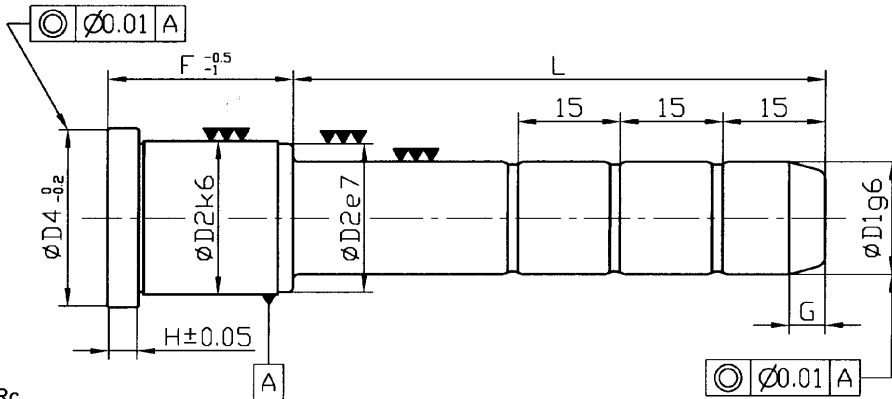
D2	D4	E	H	G	F	L	D1	Nr Ø	D1	Nr Ø
26	31	9	6	7	22	35	18	J18.022.035	20	J20.022.035
						45	18	J18.022.045	20	J20.022.045
						85	18	J18.022.085	20	J20.022.085
					27	35	18	J18.027.035	20	J20.027.035
						45	18	J18.027.045	20	J20.027.045
						65	18	J18.027.065	20	J20.027.065
						105	18	J18.027.105	20	J20.027.105
					36	125	18	J18.027.125	20	J20.027.125
						165	18	J18.027.165	20	J20.027.165
						35	18	J18.036.035	20	J20.036.035
						55	18	J18.036.055	20	J20.036.055
					46	75	18	J18.036.075	20	J20.036.075
						115	18	J18.036.115	20	J20.036.115
						135	18	J18.036.135	20	J20.036.135
						165	18	J18.036.165	20	J20.036.165
					56	35	18	J18.046.035	20	J20.046.035
						45	18	J18.046.045	20	J20.046.045
						65	18	J18.046.065	20	J20.046.065
						105	18	J18.046.105	20	J20.046.105
					66	135	18	J18.046.135	20	J20.046.135
						165	18	J18.046.165	20	J20.046.165
						55	18	J18.056.055	20	J20.056.055
						75	18	J18.056.075	20	J20.056.075
					76	95	18	J18.056.095	20	J20.056.095
155	18	J18.056.155	20	J20.056.155						
55	18	J18.066.055	20	J20.066.055						
75	18	J18.066.075	20	J20.066.075						
86	95	18	J18.066.095	20	J20.066.095					
	145	18	J18.066.145	20	J20.066.145					
	55	18	J18.076.055	20	J20.076.055					
	75	18	J18.076.075	20	J20.076.075					
96	95	18	J18.076.095	20	J20.076.095					
	135	18	J18.076.135	20	J20.076.135					
	75	18	J18.086.075	20	J20.086.075					
	95	18	J18.086.095	20	J20.086.095					
	125	18	J18.086.125	20	J20.086.125					
	55	18	J18.096.055	20	J20.096.055					
	95	18	J18.096.095	20	J20.096.095					
	135	18	J18.096.135	20	J20.096.135					



Durété: 60-62 HRc

D2	D4	E	H	G	F	L	D1	Nr Ø	D1	Nr Ø
30	35	9	6	7	27	45	22	J22.027.045	24	J24.027.045
								J22.027.065		J24.027.065
								J22.027.105		J24.027.105
					36	55	22	J22.036.055	24	J24.036.055
								J22.036.075		J24.036.075
								J22.036.105		J24.036.105
						135	22	J22.036.135	24	J24.036.135
								J22.036.165		J24.036.165
								J22.036.165		J24.036.165
					46	65	22	J22.046.065	24	J24.046.065
								J22.046.085		J24.046.085
								J22.046.105		J24.046.105
						125	22	J22.046.125	24	J24.046.125
								J22.046.165		J24.046.165
								J22.046.205		J24.046.205
					56	75	22	J22.056.055	24	J24.056.055
								J22.056.075		J24.056.075
								J22.056.095		J24.056.095
						115	22	J22.056.115	24	J24.056.115
								J22.056.165		J24.056.165
								J22.056.205		J24.056.205
					66	55	22	J22.066.055	24	J24.066.055
								J22.066.075		J24.066.075
								J22.066.095		J24.066.095
						135	22	J22.066.135	24	J24.066.135
								J22.066.155		J24.066.155
								J22.066.195		J24.066.195
					76	75	22	J22.076.055	24	J24.076.055
								J22.076.075		J24.076.075
								J22.076.095		J24.076.095
						115	22	J22.076.115	24	J24.076.115
								J22.076.145		J24.076.145
								J22.076.195		J24.076.195
					86	95	22	J22.086.075	24	J24.086.075
								J22.086.095		J24.086.095
								J22.086.135		J24.086.135
					96	75	22	J22.096.075	24	J24.096.075
								J22.096.095		J24.096.095
					116	75	22	J22.116.075	24	J24.116.075
								J22.116.115		J24.116.115
					136	95	22	J22.136.095	24	J24.136.095
								J22.136.135		J24.136.135

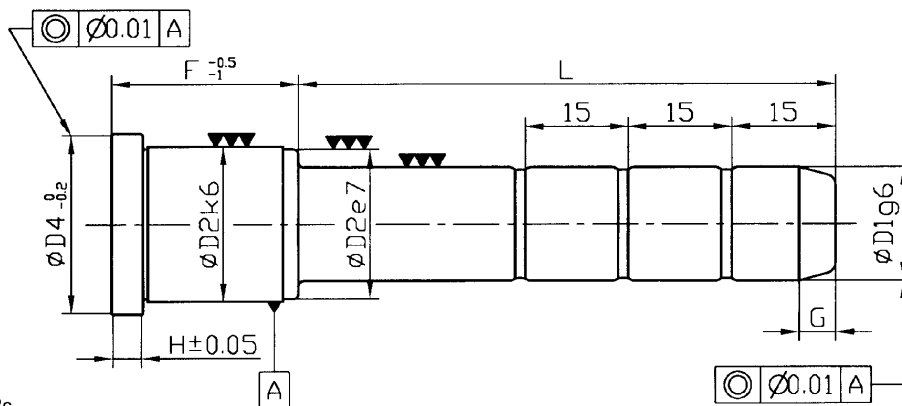
D2	D4	E	H	G	F	L	D1	Nr Ø	D1	Nr Ø
42	47	9	6	7	36	55	30	J30.036.055	32	J32.036.055
								J30.036.075		J32.036.075
								J30.036.095		J32.036.095
					46	45	30	J30.046.045	32	J32.046.045
								J30.046.065		J32.046.065
								J30.046.105		J32.046.105
						125	30	J30.046.125	32	J32.046.125
								J30.046.165		J32.046.165
								J30.046.245		J32.046.245
					56	55	30	J30.056.055	32	J32.056.055
								J30.056.075		J32.056.075
								J30.056.105		J32.056.105
						135	30	J30.056.135	32	J32.056.135
								J30.056.175		J32.056.175
								J30.056.245		J32.056.245
					66	55	30	J30.066.055	32	J32.066.055
								J30.066.075		J32.066.075
								J30.066.095		J32.066.095
						135	30	J30.066.135	32	J32.066.135
								J30.066.175		J32.066.175
								J30.066.245		J32.066.245
					76	55	30	J30.076.055	32	J32.076.055
								J30.076.075		J32.076.075
								J30.076.095		J32.076.095
						115	30	J30.076.115	32	J32.076.115
								J30.076.155		J32.076.155
								J30.076.225		J32.076.225
					86	75	30	J30.086.075	32	J32.086.075
								J30.086.115		J32.086.115
								J30.086.155		J32.086.155
					96	75	30	J30.096.075	32	J32.096.075
								J30.096.105		J32.096.105
					116	75	30	J30.116.075	32	J32.116.075
								J30.116.115		J32.116.115
					136	95	30	J30.136.095	32	J32.136.095
								J30.136.115		J32.136.115
156	115	30	J30.156.115	32	J32.156.115					
			J30.156.155		J32.156.155					



Dureté: 60-62 HRC

D2	D4	H	G	F	L	D1	Nr Ø	D1	Nr Ø
20	25	6	7	22	35	14	K14.022.035	15	K15.022.035
							K14.022.055		K15.022.055
							K14.022.070		K15.022.070
				27	35	14	K14.027.035	15	K15.027.035
							K14.027.055		K15.027.055
							K14.027.085		K15.027.085
				27	105	14	K14.027.105	15	K15.027.105
				36	35	14	K14.036.035	15	K15.036.035
							K14.036.055		K15.036.055
							K14.036.075		K15.036.075
				36	95	14	K14.036.095	15	K15.036.095
				46	35	14	K14.046.035	15	K15.046.035
							K14.046.045		K15.046.045
							K14.046.065		K15.046.065
				46	105	14	K14.046.105	15	K15.046.105
				56	55	14	K14.056.055	15	K15.056.055
							K14.056.075		K15.056.075
							K14.056.095		K15.056.095
66	55	14	K14.066.055	15	K15.066.055				
			K14.066.065		K15.066.065				
			K14.066.095		K15.066.095				
76	55	14	K14.076.055	15	K15.076.055				
			K14.076.095		K15.076.095				
			K14.076.105		K15.076.105				

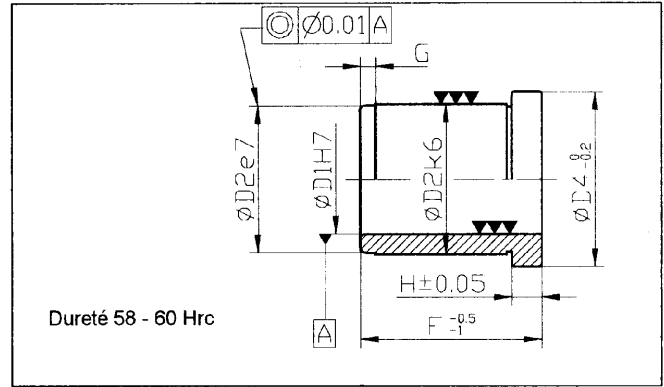
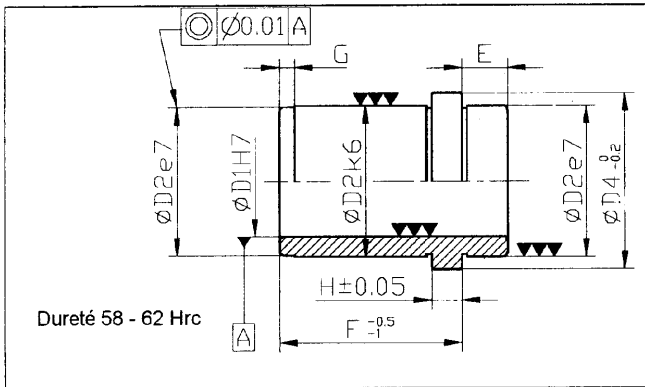
D2	D4	H	G	F	L	D1	Nr Ø	D1	Nr Ø
26	31	6	7	22	35	18	K18.022.035	20	K20.022.035
							K18.022.055		K20.022.055
							K18.022.085		K20.022.085
				27	35	18	K18.027.035	20	K20.027.035
							K18.027.055		K20.027.055
							K18.027.065		K20.027.065
							K18.027.105		K20.027.105
							K18.027.125		K20.027.125
				36	35	18	K18.036.035	20	K20.036.035
							K18.036.055		K20.036.055
							K18.036.075		K20.036.075
							K18.036.115		K20.036.115
							K18.036.135		K20.036.135
				46	45	18	K18.046.045	20	K20.046.045
							K18.046.065		K20.046.065
							K18.046.085		K20.046.085
							K18.046.105		K20.046.105
							K18.046.135		K20.046.135
				56	55	18	K18.056.055	20	K20.056.055
							K18.056.075		K20.056.075
							K18.056.095		K20.056.095
				66	55	18	K18.066.055	20	K20.066.055
							K18.066.075		K20.066.075
							K18.066.095		K20.066.095
76	55	18	K18.076.055	20	K20.076.055				
			K18.076.075		K20.076.075				
			K18.076.095		K20.076.095				
86	75	18	K18.086.075	20	K20.086.075				
			K18.086.095		K20.086.095				
96	55	18	K18.096.055	20	K20.096.055				
			K18.096.095		K20.096.095				



Dureté: 60-62 HRc

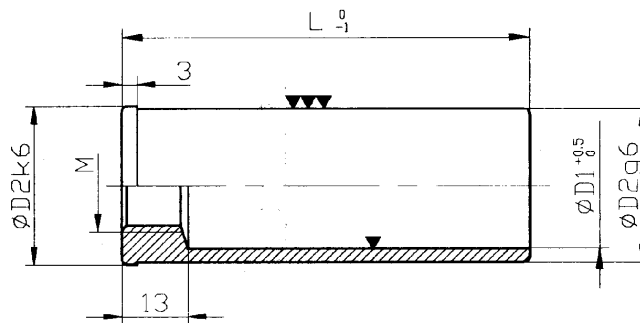
D2	D4	H	G	F	L	D1	Nr Ø	D1	Nr Ø
30	35	6	7	27	45	22	K22.027.045	24	K24.027.045
							K22.027.065		K24.027.065
							K22.027.105		K24.027.105
				36	55	22	K22.036.055	24	K24.036.055
							K22.036.075		K24.036.075
							K22.036.105		K24.036.105
				36	105	22	K22.036.135	24	K24.036.135
				46	65	22	K22.046.065	24	K24.046.065
							K22.046.085		K24.046.085
							K22.046.105		K24.046.105
							K22.046.125		K24.046.125
				56	55	22	K22.056.055	24	K24.056.055
							K22.056.075		K24.056.075
							K22.056.095		K24.056.095
							K22.056.115		K24.056.115
				66	55	22	K22.066.055	24	K24.066.055
							K22.066.075		K24.066.075
							K22.066.095		K24.066.095
							K22.066.135		K24.066.135
				76	55	22	K22.076.055	24	K24.076.055
							K22.076.075		K24.076.075
							K22.076.095		K24.076.095
K22.076.115	K24.076.115								
86	75	22	K22.086.075	24	K24.086.075				
			K22.086.095		K24.086.095				
			K22.086.135		K24.086.135				
96	75	22	K22.096.075	24	K24.096.075				
			K22.096.095		K24.096.095				
116	75	22	K22.116.075	24	K24.116.075				
			K22.116.115		K24.116.115				
136	135	22	K22.136.135	24	K24.136.135				

D2	D4	H	G	F	L	D1	Nr Ø	D1	Nr Ø
42	47	6	7	36	55	30	K30.036.055	32	K32.036.055
							K30.036.075		K32.036.075
							K30.036.105		K32.036.105
				46	45	30	K30.046.045	32	K32.046.045
							K30.046.065		K32.046.065
							K30.046.105		K32.046.105
							K30.046.125		K32.046.125
				46	165	30	K30.046.165	32	K32.046.165
				56	55	30	K30.056.055	32	K32.056.055
							K30.056.075		K32.056.075
							K30.056.105		K32.056.105
							K30.056.135		K32.056.135
							K30.056.175		K32.056.175
				66	55	30	K30.066.055	32	K32.066.055
							K30.066.075		K32.066.075
							K30.066.105		K32.066.105
							K30.066.135		K32.066.135
							K30.066.175		K32.066.175
				76	55	30	K30.076.055	32	K32.076.055
							K30.076.075		K32.076.075
							K30.076.095		K32.076.095
K30.076.115	K32.076.115								
86	75	30	K30.086.075	32	K32.086.075				
			K30.086.105		K32.086.105				
96	75	30	K30.096.075	32	K32.096.075				
			K30.096.105		K32.096.105				
116	75	30	K30.116.075	32	K32.116.075				
			K30.116.115		K32.116.115				
136	95	30	K30.136.095	32	K32.136.095				
			K30.136.115		K32.136.115				
156	115	30	K30.156.115	32	K32.156.115				



B70.xxx.xxx									
D2	D4	E	H	G	F	D1	Référence	D1	Référence
20	25	9	6	3	22	14	B70.014.022	15	B70.015.022
					27		B70.014.027		B70.015.027
					36		B70.014.036		B70.015.036
					46		B70.014.046		B70.015.046
					56		B70.014.056		B70.015.056
					66		B70.014.066		B70.015.066
					76		B70.014.076		B70.015.076
26	31	9	6	3	22	18	B70.018.022	20	B70.020.022
					27		B70.018.027		B70.020.027
					36		B70.018.036		B70.020.036
					46		B70.018.046		B70.020.046
					56		B70.018.056		B70.020.056
					66		B70.018.066		B70.020.066
					76		B70.018.076		B70.020.076
					86		B70.018.086		B70.020.086
					96		B70.018.096		B70.020.096
30	35	9	6	3	27	22	B70.022.027	24	B70.024.027
					36		B70.022.036		B70.024.036
					46		B70.022.046		B70.024.046
					56		B70.022.056		B70.024.056
					66		B70.022.066		B70.024.066
					76		B70.022.076		B70.024.076
					86		B70.022.086		B70.024.086
					96		B70.022.096		B70.024.096
					116		B70.022.116		B70.024.116
					136		B70.022.136		B70.024.136
42	47	9	6	3	36	30	B70.030.036	32	B70.032.036
					46		B70.030.046		B70.032.046
					56		B70.030.056		B70.032.056
					66		B70.030.066		B70.032.066
					76		B70.030.076		B70.032.076
					86		B70.030.086		B70.032.086
					96		B70.030.096		B70.032.096
					136		B70.030.136		B70.032.136
					156		B70.030.156		B70.032.156

B80.xxx.xxx									
D2	D4	H	G	F	D1	Référence	D1	Référence	
20	25	6	3	22	14	B80.014.022	15	B80.015.022	
				27		B80.014.027		B80.015.027	
				36		B80.014.036		B80.015.036	
				46		B80.014.046		B80.015.046	
				56		B80.014.056		B80.015.056	
				66		B80.014.066		B80.015.066	
					76		B80.014.076		B80.015.076
26	31	6	3	22	18	B80.018.022	20	B80.020.022	
				27		B80.018.027		B80.020.027	
				36		B80.018.036		B80.020.036	
				46		B80.018.046		B80.020.046	
				56		B80.018.056		B80.020.056	
				66		B80.018.066		B80.020.066	
					76		B80.018.076		B80.020.076
					86		B80.018.086		B80.020.086
					96		B80.018.096		B80.020.096
30	35	6	3	27	22	B80.022.027	24	B80.024.027	
				36		B80.022.036		B80.024.036	
				46		B80.022.046		B80.024.046	
				56		B80.022.056		B80.024.056	
				66		B80.022.066		B80.024.066	
				76		B80.022.076		B80.024.076	
				86		B80.022.086		B80.024.086	
				96		B80.022.096		B80.024.096	
					116		B80.022.116		B80.024.116
					136		B80.022.136		B80.024.136
42	47	6	3	36	30	B80.030.036	32	B80.032.036	
				46		B80.030.046		B80.032.046	
				56		B80.030.056		B80.032.056	
				66		B80.030.066		B80.032.066	
				76		B80.030.076		B80.032.076	
				86		B80.030.086		B80.032.086	
				96		B80.030.096		B80.032.096	
					136		B80.030.136		B80.032.136
					156		B80.030.156		B80.032.156

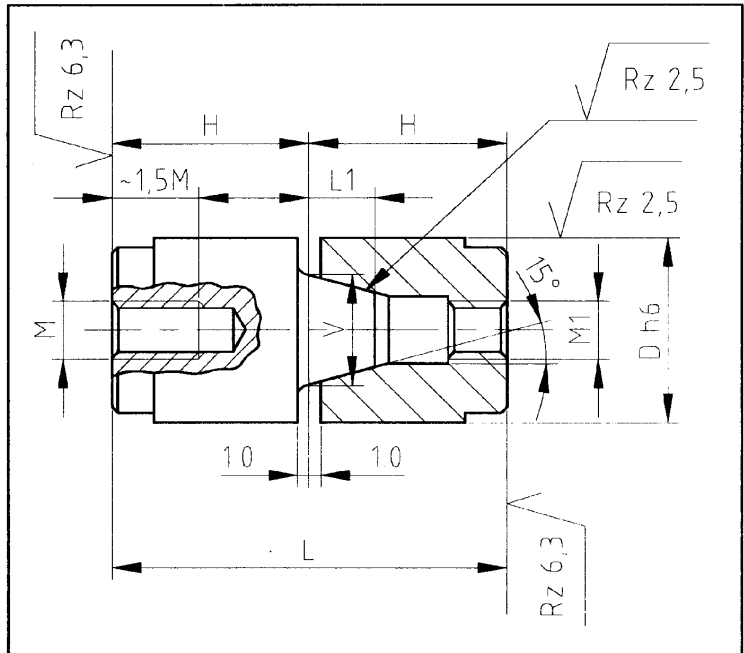


Dureté 58-62 HRc

B90.xxx.xxx				
D1	D2	M	L	Référence.
15.5	20	M12	40	B90.020.040
			60	B90.020.060
			80	B90.020.080
			100	B90.020.100
			120	B90.020.120
			140	B90.020.140
20.5	26	M16	40	B90.026.040
			60	B90.026.060
			80	B90.026.080
			100	B90.026.100
			120	B90.026.120
			140	B90.026.140
24.5	30	M18	60	B90.030.060
			80	B90.030.080
			100	B90.030.100
			120	B90.030.120
			140	B90.030.140
			160	B90.030.160
			180	B90.030.180
32.5	42	M18	60	B90.042.060
			100	B90.042.100
			120	B90.042.120
			140	B90.042.140
			160	B90.042.160
			180	B90.042.180

Matière : 1.2379
 Dureté : 60 ± 2 HRC

Exemple de commande :
Centreur D = 20 H = 27
 Veuillez indiquer : réf. **W60.020.027**



D	H	L1	M	M1	L	V	Référence
12	17	4	4	4	34	8	W60.012.017
14	17	6	5	5	34	10	W60.014.017
16	17	6	5	5	34	10	W60.016.017
20	27	9	8	8	54	15	W60.020.027
25	27	10	8	8	54	20	W60.025.027
26	27	10	8	8	54	20	W60.026.027
30	36	14	10	10	72	25	W60.030.036
32	36	14	10	10	72	25	W60.032.036
42	46	18	10	10	92	35	W60.042.046

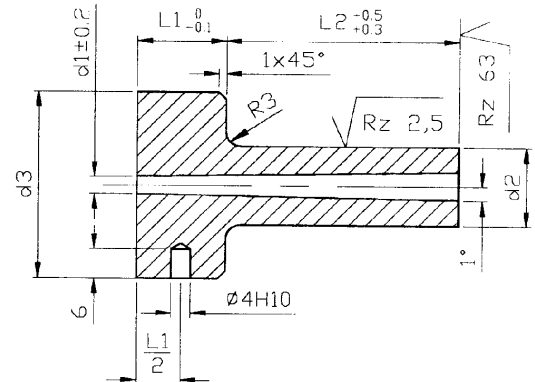
Suivant : DIN 16752
 Matière : 60 Mn Si Cr 4
 Dureté : 55 ± 2 HRC

Exemple de commande :

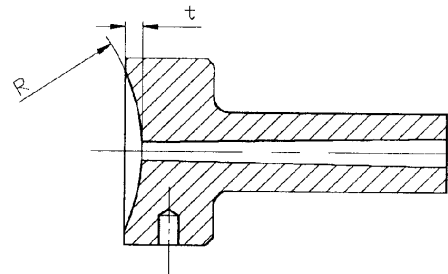
Buse à injection R = 15.5 d1 = 2.5 L2 = 36

Veuillez indiquer : réf. **W20.125.036**

R = 0



R = 15.5 ou R = 40



R = 0

d1 ± 0,2	L1	L2	d2 k6	d3 g6	t	Référence
2,5	13	22	12	28	1,5	W20.025.022
		27				W20.025.027
		36				W20.025.036
		46				W20.025.046
3,5	13	22	12	28	1,5	W20.035.022
		27				W20.035.027
		36				W20.035.036
		46				W20.035.046
		56				W20.035.056
3	18	27	18	38	3	W20.030.027
		36				W20.030.036
		46				W20.030.046
		56				W20.030.056
		76				W20.030.076
		96				W20.030.096
		116				W20.030.116
4	18	27	18	38	3	W20.040.027
		36				W20.040.036
		46				W20.040.046
		56				W20.040.056
		76				W20.040.076
		96				W20.040.096
		116				W20.040.116

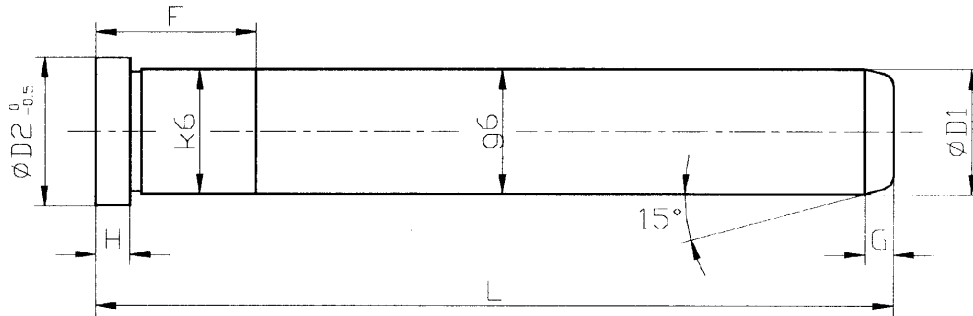


BUSE D'INJECTION

W20.xxx.xxx

R = 15.5						
d1±0,2	L1	L2	d2 k6	d3 g6	t	Référence
2,5	13	22	12	28	1,5	W20.125.022
		27				W20.125.027
		36				W20.125.036
		46				W20.125.046
3,5	13	22	12	28	1,5	W20.135.022
		27				W20.135.027
		36				W20.135.036
		46				W20.135.046
		56				W20.135.056
3	18	27	18	38	3	W20.130.027
		36				W20.130.036
		46				W20.130.046
		56				W20.130.056
		76				W20.130.076
		96				W20.130.096
		116				W20.130.116
4	18	27	18	38	3	W20.140.027
		36				W20.140.036
		46				W20.140.046
		56				W20.140.056
		76				W20.140.076
		96				W20.140.096
		116				W20.140.116

R = 40						
d1±0,2	L1	L2	d2 k6	d3 g6	t	Référence
2,5	13	22	12	28	1,5	W20.425.022
		27				W20.425.027
		36				W20.425.036
		46				W20.425.046
3,5	13	22	12	28	1,5	W20.435.022
		27				W20.435.027
		36				W20.435.036
		46				W20.435.046
		56				W20.435.056
3	18	27	18	38	3	W20.430.027
		36				W20.430.036
		46				W20.430.046
		56				W20.430.056
		76				W20.430.076
		96				W20.430.096
		116				W20.430.116
4	18	27	18	38	3	W20.440.027
		36				W20.440.036
		46				W20.440.046
		56				W20.440.056
		76				W20.440.076
		96				W20.440.096
		116				W20.440.116



F	G	H	D2	D1	L	Référence
15	3	4	13	10	40	P50.010.040
					60	P50.010.060
					80	P50.010.080
					90	P50.010.090
15	4	6	16	12	60	P50.012.060
					80	P50.012.080
					90	P50.012.090
					100	P50.012.100
					120	P50.012.120
					140	P50.012.140
20	4	6	18	14	60	P50.014.060
					80	P50.014.080
					100	P50.014.100
					120	P50.014.120
					140	P50.014.140
					160	P50.014.160
20	4	6	20	16	180	P50.014.180
					60	P50.016.060
					80	P50.016.080
					100	P50.016.100
					120	P50.016.120
					140	P50.016.140
20	4	6	20	16	160	P50.016.160
					180	P50.016.180
					60	P50.018.060
					80	P50.018.080
					100	P50.018.100
					120	P50.018.120
18	5	6	22	18	140	P50.018.140
					160	P50.018.160
					180	P50.018.180
					200	P50.018.200
					220	P50.018.220
					240	P50.018.240
					260	P50.018.260
					280	P50.018.280
					300	P50.018.300

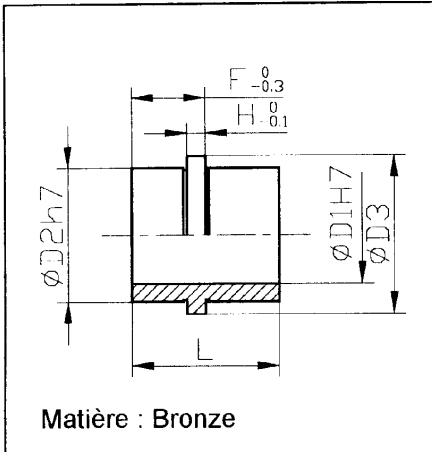
F	G	H	D2	D1	L	Référence
18	5	6	24	20	60	P50.020.060
					80	P50.020.080
					100	P50.020.100
					120	P50.020.120
					140	P50.020.140
					160	P50.020.160
					180	P50.020.180
					200	P50.020.200
					220	P50.020.220
					240	P50.020.240
28	5	6	26	22	260	P50.020.260
					280	P50.020.280
					300	P50.020.300
					100	P50.022.100
					120	P50.022.120
					140	P50.022.140
					160	P50.022.160
					180	P50.022.180
					200	P50.022.200
					220	P50.022.220
28	5	6	28	24	240	P50.022.240
					260	P50.022.260
					280	P50.022.280
					300	P50.022.300
					320	P50.022.320
					340	P50.022.340
					100	P50.024.100
					120	P50.024.120
					140	P50.024.140
					160	P50.024.160
180	P50.024.180					
200	P50.024.200					
220	P50.024.220					
240	P50.024.240					
260	P50.024.260					
280	P50.024.280					
300	P50.024.300					
320	P50.024.320					
340	P50.024.340					

F	G	H	D2	D1	L	Référence
50	5	10	32	28	100	P50.028.100
					120	P50.028.120
					140	P50.028.140
					160	P50.028.160
					180	P50.028.180
					200	P50.028.200
					220	P50.028.220
					240	P50.028.240
					260	P50.028.260
					280	P50.028.280
50	5	10	34	30	300	P50.028.300
					100	P50.030.100
					120	P50.030.120
					140	P50.030.140
					160	P50.030.160
					180	P50.030.180
					200	P50.030.200
					220	P50.030.220
					240	P50.030.240
					260	P50.030.260
280	P50.030.280					
300	P50.030.300					



BAGUE

B55.xxx.xxx

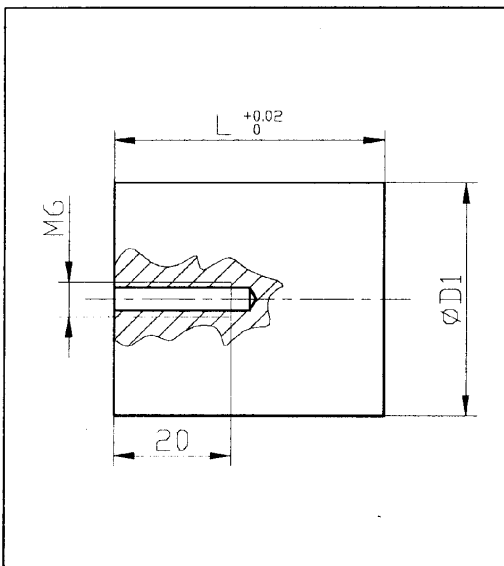


B55.xxx.xxx						
F	H	D2	D3	D1	L	Référence
12	3	22	26	16	24	B55.016.024
14					28	B55.016.028
17	4	25	30	18	34	B55.018.034
22					44	B55.018.044



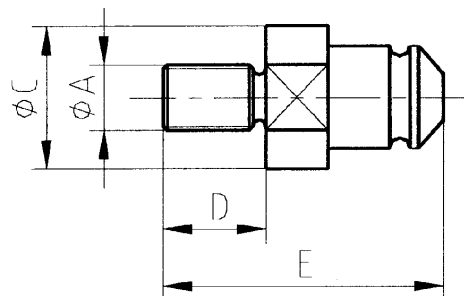
PILIER TARAUDE

A64.xxx.xxx

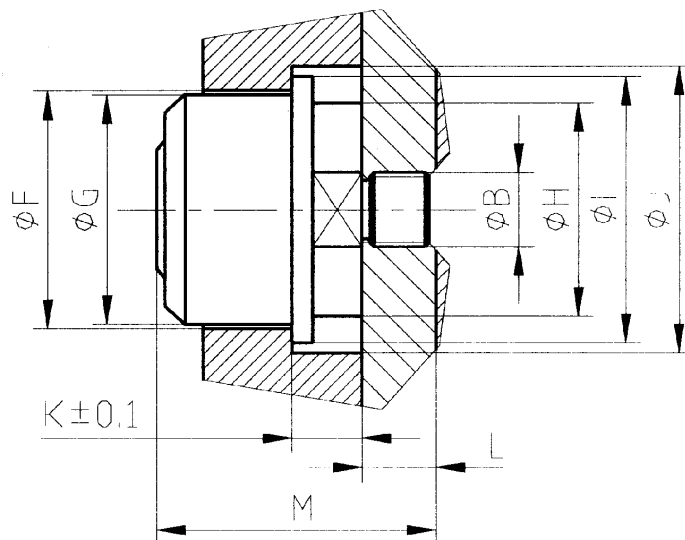


D1	L	Référence
30	42	A64.030.042
	46	A64.030.046
	62	A64.030.062
	66	A64.030.066
	82	A64.030.082
	86	A64.030.086
	102	A64.030.102
	106	A64.030.106
40	42	A64.040.042
	46	A64.040.046
	56	A64.040.056

D1	L	Référence	
40	62	A64.040.062	
	66	A64.040.066	
	76	A64.040.076	
	82	A64.040.082	
	86	A64.040.086	
	96	A64.040.096	
	102	A64.040.102	
	106	A64.040.106	
	116	A64.040.116	
	126	A64.040.126	
	136	A64.040.136	
	146	A64.040.146	
	50	56	A64.050.056
		66	A64.050.066
76		A64.050.076	
86		A64.050.086	
96		A64.050.096	
106		A64.050.106	
116		A64.050.116	
60	126	A64.050.126	
	136	A64.050.136	
	146	A64.050.146	
	156	A64.050.156	



Partie mâle W50.001.xxx



Partie femelle W50.002.xxx

Deux modèles disponibles :

Petit modèle : W50.001.5xx - W50.002.5xx
 Grand modèle : W50.001.6xx - W50.002.6xx

Force de traction 2400 kg
 Force de traction 3200 kg

Exemple de commande :

Attelage d'éjection grand modèle partie mâle M18

Veillez indiquer : Réf **W50.001.618**

A	C	D	E	Référence
M10 x 1,5	25,8	20	55	W50.001.510
M12 x 1,75				W50.001.512
M14 x 2				W50.001.514
M16 x 2	35	35	68	W50.001.616
M18 x 2,5				W50.001.618
M20 x 2,5				W50.001.620
M24 x 3				W50.001.624
M27 x 3				W50.001.627
M30 x 3,5				W50.001.630

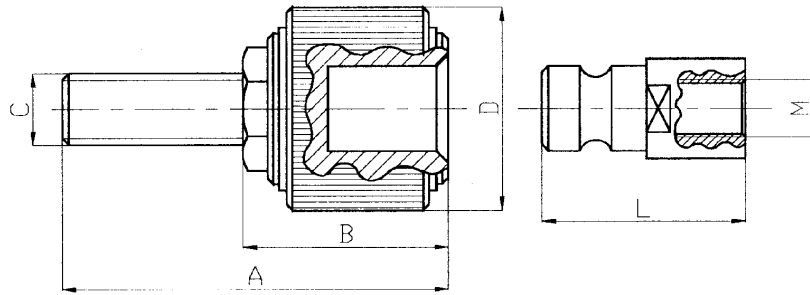
B	F	G	H	I	J	K	L	M	Référence
M16 x 1,5	40	38	38	48	53	13	15	52	W50.002.516
M16 x 1,5									W50.002.616
M18 x 1,5	58	56	52	65	70	17	17	68	W50.002.618
M20 x 1,5									W50.002.620
M24 x 1,5									W50.002.624
M27 x 1,5									W50.002.627
M30 x 1,5									W50.002.630



ATTELAGE D'ÉJECTION

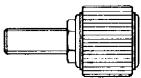
pour machines à éjection hydraulique

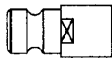
W51.00x.xxx
W52.00x.xxx

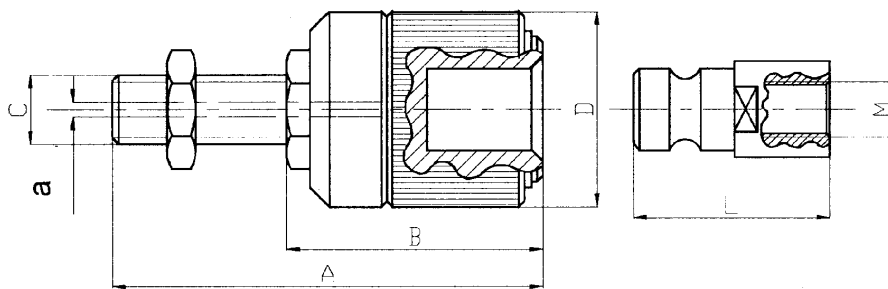


W51.002.xxx

W51.001.xxx

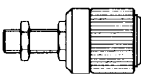
	A	B	C	D
W51.002.112	80	45	M12	ø45
W51.002.116			M16	
W51.002.120			M20	
W51.002.220	110	58	M20	ø60
W51.002.224			M24	
W51.002.324	150	80	M24	ø75
W51.002.330			M30	
W51.002.336			M36	

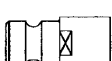
	L	M
W51.001.110	45	M10
W51.001.112	45	M12
W51.001.116	55	M16
W51.001.220	70	M20
W51.001.224		M24
W51.001.324	85	M24
W51.001.330	100	M30



W52.002.xxx

W51.001.xxx

	A	B	C	D	a Décalage axial possible
W52.002.112	95	60	M12	ø45	ø5
W52.002.116			M16		
W52.002.120			M20		
W52.002.220	128	78	M20	ø60	ø5
W52.002.224			M24		
W52.002.324	174	106	M24	ø75	ø6
W52.002.330			M30		
W52.002.336			M36		

	L	M
W51.001.110	45	M10
W51.001.112	45	M12
W51.001.116	55	M16
W51.001.220	70	M20
W51.001.224		M24
W51.001.324	85	M24
W51.001.330	100	M30